

Local Control Station Support Structures

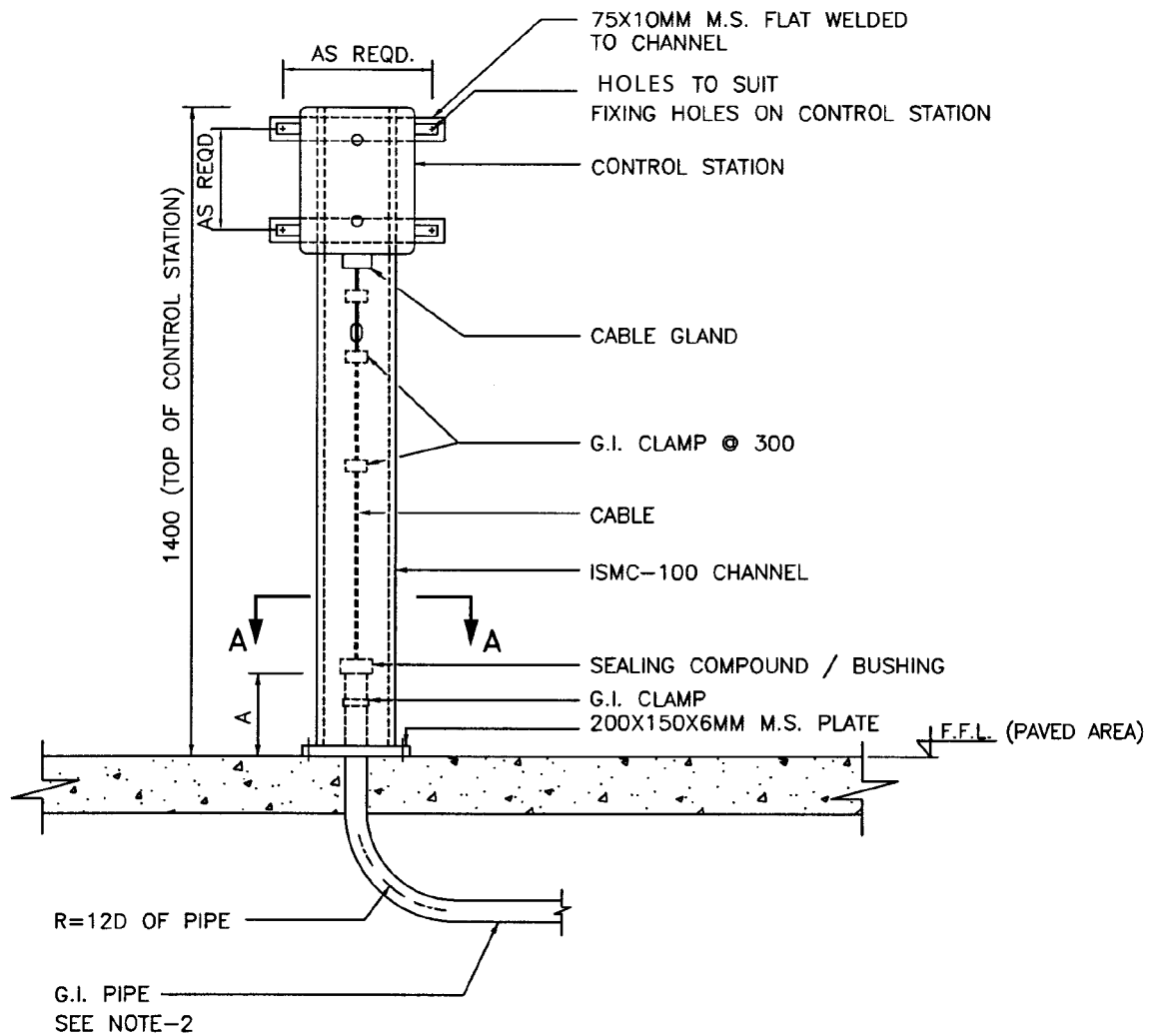
The support structures are intended for Local Control Stations which need to be installed either on paved or unpaved surfaces. The supports are made from ISMC-100 steel channels and are available in standard sizes. These structures will help reduce fabrication costs and time on site and proving to be an ideal solution for your next project.

If required, the structures can be made in custom sizes on request.

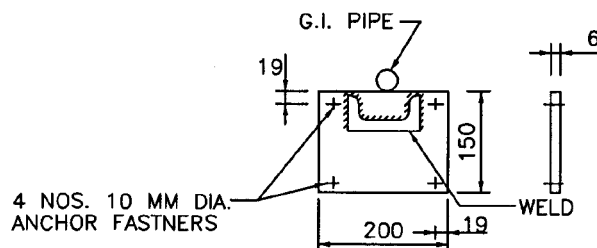
Product Code	Height (H) (mm)	Mounting	Channel Type
LCSP.0140.CH.PV	1400	Paved Surface	ISMC 100
LCSP.0140.CH.UP	1400	Unpaved Surface	ISMC 100



LCSP.0140.CH.PV



A = $\begin{cases} 150 \text{ MM (MIN.) FOR INDOOR LOCATION} \\ 300 \text{ MM (MIN.) FOR OUTDOOR LOCATION} \end{cases}$



SECTION-AA

NOTES:—

1. ALL DIMENSIONS ARE IN MM.
2. CABLE GLANDS, GI PIPE, MOUNTING BOLTS, SEALING COMPOUND, ETC ARE TO BE ORDERED SEPARATELY.
3. FINISH; PAINTED AS PER CLIENT REQUIREMENT WITH THIRD PARTY INSPECTION.

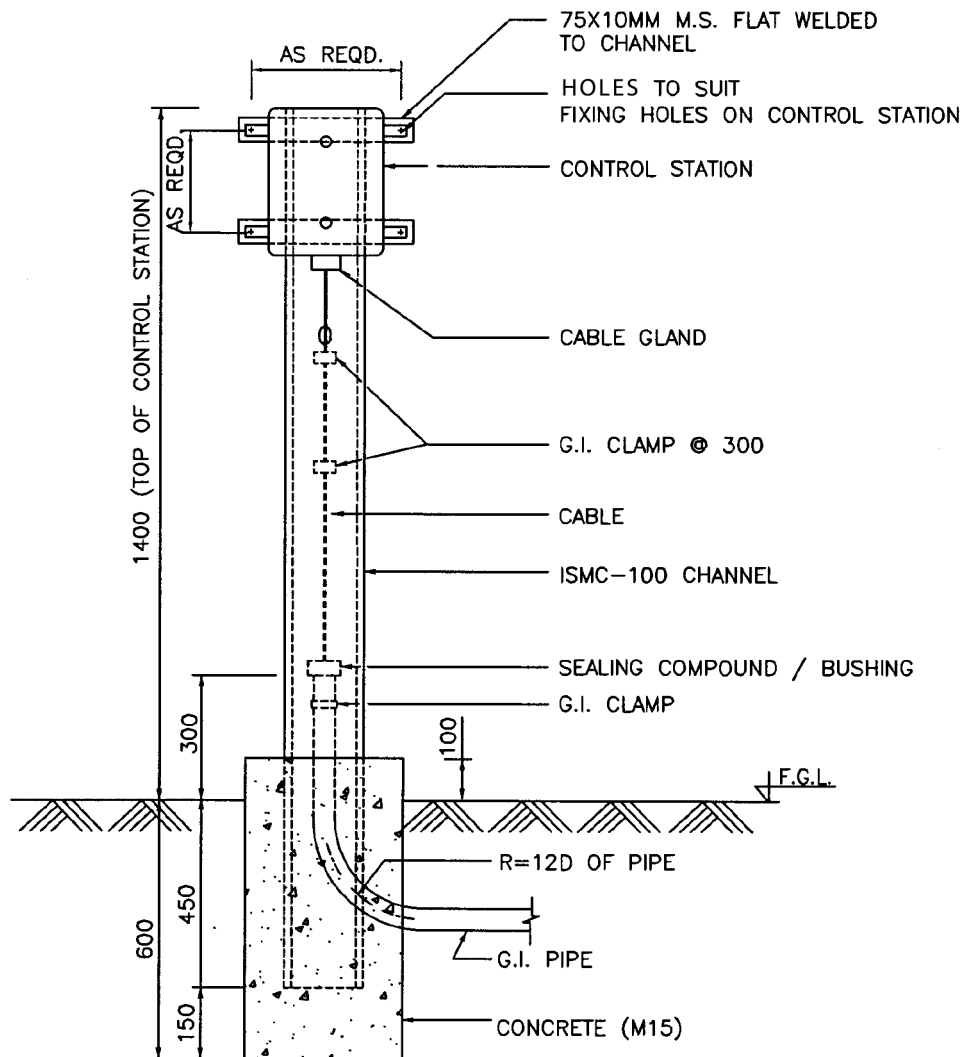


Aegion Dynamic

 www.aegiondynamic.com

 ads@aegiondynamic.com

LCSP.0140.CH.UP



NOTES:—

1. ALL DIMENSIONS ARE IN MM.
2. CABLE GLANDS, GI PIPE, MOUNTING BOLTS, SEALING COMPOUND, ETC ARE TO BE ORDERED SEPARATELY.
3. FINISH; PAINTED AS PER CLIENT REQUIREMENT WITH THIRD PARTY INSPECTION.

